



PRODUCT Catalogue

- ◆ PVC Flooring
- ◆ Wooden Flooring
- ◆ Wall to Wall Carpets
- ◆ Carpet Tiles & Planks
- ◆ Artificial Grass
- ◆ Sports Flooring

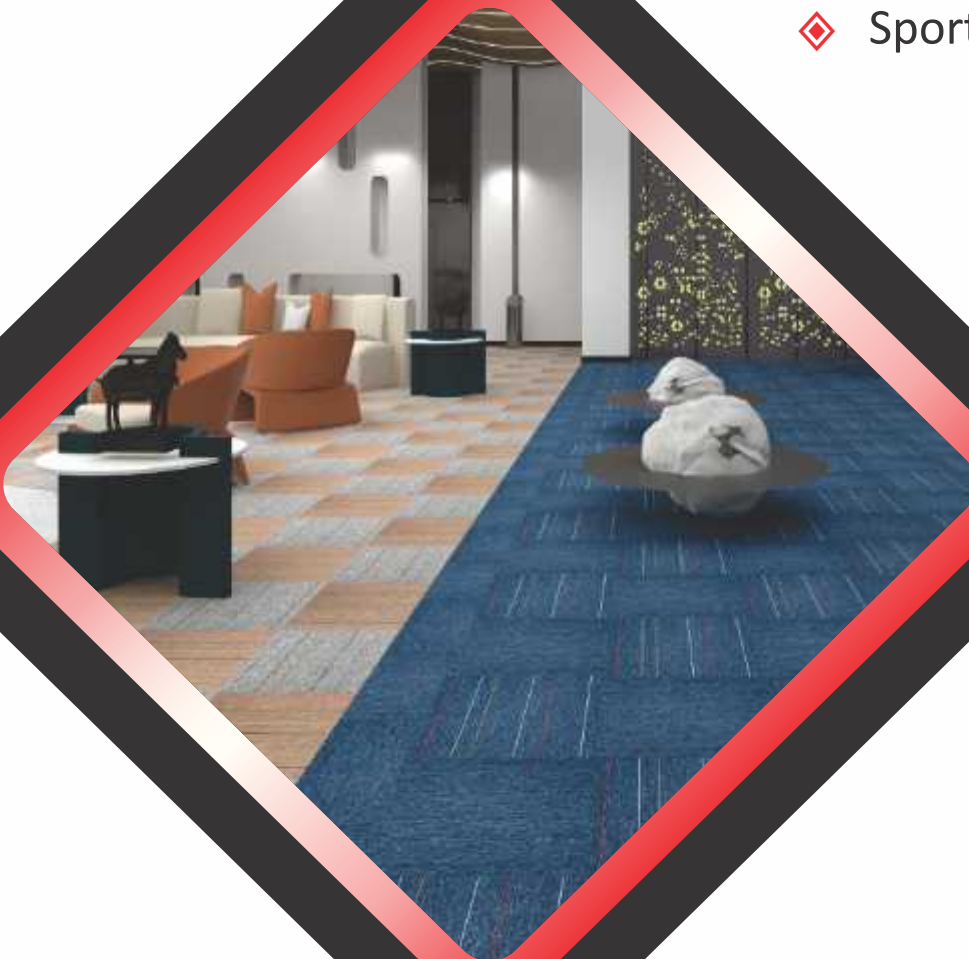


Table Of



01

PVC Flooring

Vinyl Planks & Tiles

Spruce	02
Spruce Plus	03
Eco - Lux	04
Marbotile	05
Conifer	06
Conifer Plus	07
Rustic	08
Garnet	09
Cypress	10

Sports Flooring

Frisky	13
--------	----

02

Sports Flooring

PVC Flooring

Frisky - 4.5 mm	13
-----------------	----

Sports Grass

Multisports - 14 mm	} 14
Multisports - 16 mm	

03

Wooden Flooring

Delta	16
Lumber	17
French Bleed	18
Greek	19
Herringbone	20
Aqua (Upcoming)	11

Contents



04

Wall to Wall Carpets

Level Loop

Prima	22
Square	23

Multi level Loop

Perth	24
Moket	25
Venice	26
Moscow	27

Cut Pile

Velvet	28
Satin	29
Plush	30

05

Carpet Tiles & Planks

Plain Level Loop

Ace	32
Candid	33
Topaz	34

Linear Level Loop

Trio	35
Barcode - NX	36
Lisbon - NX	37
Linux	38

Multi Level Graphic

Rome Paris	39
Berlin NX	40
Brisbane	41
Canberra	42
Sparkle	43
Jacquard	44

06

Artificial Grass

Landscape

10 mm	}	46
20 mm		
25 mm		
30 mm		
35 mm		
40 mm	}	14
50 mm		
Multisports - 14 mm		
Multisports - 16 mm		

Sunset Range

Track	}	47
Garden		

PVC FLOORING

PVC Flooring a synthetic cousin of linoleum is a type of flooring material made of vinyl plastic polymer. They are designed to resemble natural wood, stone, or other materials and are a popular choice for their affordability, durability, and ease of maintenance. Some of the characteristics of Vinyl Planks and Tiles include:

- **Durable:** Vinyl is known for its durability and resistance to wear and tear, making it a good choice for domestic & low-high traffic areas.
- **Water-resistant:** Vinyl flooring is resistant to water, making it a good option for kitchens, and other areas where regular use of water is a concern.
- **Versatile:** Vinyl planks and tiles are available in a wide range of styles and colours, making it easy to find a design that fits the decor of your home
- **Cost-effective:** Vinyl flooring is often more affordable than natural wood or stone, making it a budget friendly option for many homeowners.

In terms of utility, vinyl flooring is often used in residential and commercial spaces for its durability, water resistance, and affordability. It is particularly popular in areas that need decent aesthetics like living room , bedroom , office work spaces ,conference rooms ,etc.

Technical Details

SPECIFICATIONS	VINYL PLANKS & TILE								
	SPRUCE	SPRUCE PLUS	ECO-LUX	MARBOTILE	CONIFER	CONIFER PLUS	RUSTIC	GARNET	CYPRESS
THICKNESS ± 5%	1.5 MM				2 MM				3 MM
PLANK SIZE	9"x36"	6"x36"	6"x36"	18"x18"	9"x36"	6"x36"	6"x36"	18"x18"	6"x36"
TOTAL WEIGHT	2.80 kg	2.80 kg	2.80 kg	2.80 kg	4 kg	4 kg	4 kg	4 kg	5.20 kg/m ²
WEAR LAYER	70 microns	100 microns	100 microns	70 microns	200 microns	200 microns	200 microns	200 microns	300 microns UV Coated
SUITABLE FOR	Residential				Semi commercial				Commercial, Anti Slip



P - 15161



P - 152414



P - 151621



P - 150111



P - 157006



P - 151623



P - 156083



P - 151622



P - 15271



P - 1520



P - 1520 A



P - 1521



P - 1519



P - 1513



P - 1514



P - 1515



P - 1516



P - 1517



P - 1518



1101



1102



1103



1104



1105



1106



1107



1108



T - 155563



T - 155565



T - 155571



T - 155573



T - 155581



P - 2138-1



P - 2021



P - 2019



P - 2020



P - 2095



P - 2128



P - 2022



P - 2241



P - 23010



P - 20533



P - 23112



P - 2272



P - 2014



P - 2016



P - 2017



P - 2018



P - 2023



P - 2024



29052



29054



29056



29058



T - 20610



T - 20711



T - 20712



T - 20821



T - 20822



P - 3011



P - 3016



P - 3012



P - 3017



P- 3013



P - 3018



P- 3014



P- 3020





In continuation to upgrade ranges, we will shortly be launching a unique product viz. **Aqua**.

Exciting features of this product are as follows:-

- Hassle Free Installation:** It is easy to install due to its click-and-lock design which requires no adhesive and is prefinished also the unilin click is strong enough to make it a complaint free installation process.
- PVC Free:** It is made of wood composite and other moisture-resistant materials without using any PVC or vinyl components.
- Zero VOC:** The material used in making Aqua have zero Volatile Organic Compound (VOC) emissions and do not release any harmful chemicals ensuring a healthier indoor environment.
- Natural Fibres:** The natural fibres used are designed to resist moisture.
- Water Proof:** It is constructed using moisture-resistant materials and a locking mechanism that creates a tight seal between the planks and the high density prevents water from penetrating the surface and reduces swelling to < 5%.
- Environment Friendly:** The raw materials used to produce Aqua have been inspected and are free from pests, termites and other related organisms. This criteria, apart from Zero PVC and Zero VOC content, makes Aqua highly environment friendly.
- Heavy Density Core:** A heavy density core is used in Aqua to provide stability, durability, and sound insulation.
- Scratch Resistant:** It is scratch Resistant due to a hard, protective wear layer and the use of materials like HDF and heavy density core that resist scratches more than traditional hardwood.

TECHNICAL SPECIFICATION

Top Surface	Melamine Impregnated Decorative Film protected by Aluminum Oxide Abrasive Overlay.
Core Material	Black Core H.D.F. (High Density Fiberboard) with an Average Density >1050 kg/m ³
Bottom Surface	Balancing Film for Dimensional Stability
Thickness	5 mm
Length x Width	1215 mm x 165 mm
Click Type	Unilin with Painted V- Groove
Installation Method	Interlocking Click System (Glue less installation)
Warranty	7 Year Heavy Domestic 3 Year General commercial Use
Box Packing	12 Pcs / 25.89 Sq. ft.
Fit for Use Grading	AC 4/32 - EN 13329 Compliance 
Features	

TECHNICAL DATA

TEST	STANDARD	CHARACTERISTICS
Behaviour to Abrasion	EN 13329	IP 4000 Resolutions
Porosity	Graphite Test 1	Grade 1 (Pore- Free)
Resistant to glowing cigarette ash	EN 13329	Degree 5: No Visible Changes
Fire Classification	DIN 4102	Flame Retardant-B1
Ignibility	DIN 51960	Does Not Ignite Easily
Indentation Test	EN 13329	Residual Indentation 0.0 MM
Chair Castor Test	EN 13329	No Negative changes when using Soft wheels castor
Simulated Pushing of Furniture Leg.	EN 13329	No Visible Damage
Thickness Swelling Test	EN 13329	< 5% Swelling

Sports Flooring

Sports flooring refers to specialized flooring systems specifically designed and installed for sports activities. Some of the characteristics of sports flooring are as follows:

- **Reduced risk of injury:** It provides a cushioned surface that reduces the impact of hard landings, reducing the risk of injury to athletes.
- **Improved performance:** The right type of sports flooring can enhance an athlete's performance by offering excellent traction and stability.
- **Maintenance and cleaning:** Many options are designed for easy maintenance and cleaning, helping to keep the surface hygienic and in good condition.
- **Aesthetic appeal:** It enhances the overall look of a sports facility, providing a professional and visually appealing environment.

Utility wise, Frisky Vinyl Sports Flooring provides a consistent playing surface for indoor sports viz. Badminton, Table Tennis, Basket Ball, Futsal, Kabaddi, Volleyball, Squash, Multisports Arena, Clubhouse , Gym , Aerobics Centres & many more.

Unlike natural grass, synthetic Sports turf requires minimal maintenance and is easy to clean. Providing a low-maintenance and cost-effective alternative to natural grass, making it ideal for sports facilities on a budget.

Technical Details

FRISKY

PVC SPORTS FLOORING

SPECIFICATIONS	
Width	1.8 mtrs
Length	15 mtrs
Thickness	4.5 MM
Wear layer thickness	1.0 mm
Suitable for	Commercial

Multisports Grass

THICKNESS	16 mm	14 mm
Machine Gauge	3/16"	3/16"
Stitch Rate/m	330	330
Tuft Density / psm	69300	69300
Dtex	5500	3600
Colour	2 Tone	
Backing	PP Cloth+ Mesh +SBR Latex	PP Cloth+ Mesh +SBR Latex





RED



YELLOW



BLUE



ORANGE



GREEN



GREY



MAPLE WOOD



OAK WOOD



16 mm - Parrot Green



16 mm - Dark Green



14 mm




WOODEN FLOORING

HDF (High Density Fiberboard) Laminate Flooring is a type of engineered flooring made by bonding multiple layers of fiberboard together under high pressure. The top layer is a decorative paper that resembles the hardwood pattern. Some of the key characteristics of Wooden Flooring include:

- **Durability:** The high density fiberboard core provides a sturdy and stable base, making it resistant to dents and scratches.
- **Appearance:** The top decorative layer is available in a variety of styles and designs, mimicking the look of natural wood.
- **Easy to install:** Wooden flooring is a floating floor system, which means it can be easily installed without glue or nails.
- **Affordable:** Compared to natural hardwood flooring, HDF laminate flooring is much more affordable and can be a more budget-friendly option for flooring.
- **Easy Maintenance:** Wooden flooring is easy to clean and maintain, making it an ideal choice for busy households and commercial spaces.

Utility-wise, Wooden flooring is commonly used in homes, offices, and other commercial spaces. It is suitable for use in any room, including kitchens, basements, etc. It is also easy to install, making it a popular choice for DIY flooring projects.

Technical Details

	Delta		FRENCH BLEED	GREEK	Herringbone
Top Surface	Melamine Impregnated Decorative Film Protected by Aluminum Oxide Abrasive Overlay.				
Botom Surface	Balancing Film for Dimensional Stability.				
Thickness	8.0 mm	8.0 mm	8.0 mm	8.0 mm	8.0 mm
Length x Width	1215 mm x 196 mm	1215 mm x 196 mm	1215 mm x 145 mm	1215 mm x 300 mm	606 mm x 101 mm
Box Packing	8 Pcs / 20.50 Sq. ft.	8 Pcs / 20.50 Sq. ft.	12 Pcs / 22.75 Sq. ft.	6 Pcs / 23.54 Sq. ft.	36 pcs / 23.71 Sq.ft.
Fit for use Grading	Light Commercial	Light Commercial	Light Commercial	Commercial	Commercial
Installation Method	Interlocking Double Click System (Glue less Installation)	Interlocking Double Click System (Glue less Installation)	Arc Click with Wax Coating & German Technology	Unilin Click with Wax Coating & German Technology	Glue less installation with unilin Click & Painted V-Groove



3001



3002



3003



3004



3005



3006



3007



3008



3009



3010



Exhibition Range Plain White 3011



Exhibition Range Plain Black 3012



Cedar 8009



Walnut 8003



Maple 8004



Birchwood 8006



Oak 8007



Redwood 8008



Wenge 8001



Light Teak 8015



Apricot 8017



Alpine 8002



Windsor 8021



Grey Oak 8029



Citrus 8005





9001



9002



9003



9004



9005



9006



9007



8823



8824



8825



8826



8827



8828



8101



8102



8103



8104



8105



8106



8107



8108

WALL TO WALL CARPET

Wall-to-Wall Carpet also known as Broadloom Carpet refers to a type of floor covering that covers the entire floor surface of a room, from one wall to another. The carpet is usually cut to size, allowing for a seamless installation without gaps between the walls and the carpet. It is typically made of synthetic fibers and is designed to provide comfort, insulation, and noise reduction. Some of its key characteristics include:

- **Durability:** Synthetic carpet fibers are strong, resistant to wear and tear and can withstand heavy foot traffic, making wall-to-wall carpet a popular choice for high-traffic areas.
- **Comfort:** Carpet provides a soft and comfortable surface for walking and playing. It is also a good insulator, helping to reduce noise and maintain room temperature.
- **Style Options:** Wall-to-wall carpet is available in a wide range of styles, colours, and textures, making it easy to find one that complements the decor of any room.

Wall to Wall Carpet is commonly used in residential homes, commercial spaces, and public buildings. Its durability, stain resistance and low maintenance makes it a popular choice for high-traffic areas. Its colour fastness and wide range of style options also make it a popular choice for adding style and comfort to any space.

Technical Details

	Pile Construction	Yarn	Gauge	Total Height	Pile Weight	Total Weight	Primary Backing	Secondary Backing	Width	Length
PRIMA	Tufted Loop Pile	Polypropylene	1/10	4-5 mm	16 oz	1100 gsm	Woven Polypropylene	Action Back with Eco-friendly Additive	4.00 mtr	25to30mtr
SQUARE	Graphic Tufted Loop Pile	100% Soluton Dyed P.P	1/10	6 mm	550 gsm	1400 gsm	Woven Polypropylene	Action Back with Eco-friendly Additive	4.00 mtr	25to30mtr
PERTH	Hi Low Modulated Loop Pile	100% Polypropylene	1/8	7 mm	525 mm	1450 mm	Woven Polypropylene	Soft Felt back with Eco-friendly Additive	4.00 mtr.	25to30mtr
MOKET	Loop Pile Hi Low Modulated	100% P.P	1/10	7.50 mm	500 gsm	1350 gsm	Woven Polypropylene	Action Back with Eco-friendly Additive	4.00 mtr	25to30mtr
VENICE	Tufted Loop Pile	100% P.P	1/12	7.50 mm	700 gsm	1600 gsm	Woven Polypropylene	Action Back with Eco-friendly Additive	4.00 mtr	25to30mtr
MOSCOW	Graphic Loop Pile	100% P.P	1/8	6 mm	750 gsm	1600 gsm	Woven Polypropylene	Action Back with Eco-friendly Additive	3.66 mtr	25to30mtr
VELVET	Cut Pile	PP. Heat set Frieze	1/8	7 mm	850 gsm	1700 gsm	Woven Polypropylene	Action Back with Eco-friendly Additive	4.00 mtr	25to30mtr
SATIN	Cut Pile	PP Heatset Soft	1/8	12 mm	720 mm	1800 mm	Woven Polypropylene	Soft Felt back with Eco-friendly Additive	4.00 mtr.	25to30mtr
PLUSH	Cut Pile	PP Heatset Soft	1/8	17.50 mm	1550 mm	2500 mm	Woven Polypropylene	Soft Felt back with Eco-friendly Additive	4.00 mtr.	25to30mtr
TRACK	Tufted Loop Pile	100% Polyolefin	1/10	5-6 mm	500 g/m	1300 gsm	Woven Polypropylene	Action Back with Eco-friendly Additive	4.00 mtr.	25to30mtr
GARDEN	Tufted Loop Pile	Nylon-6.0 First Grade	1/10	5-6 mm	350 gsm	1100 gsm	Woven Polypropylene	Action Back with Eco-friendly Additive	4.00 mtr	25to30mtr



301 - Red Black



302 - P. Blue



304 - Rust



306 - L Grey



307 - Fawn



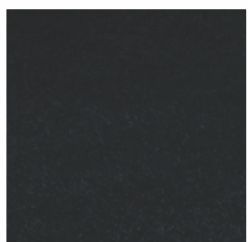
308 - D Grey



309 - Sky Blue



312 - Brown



314 - Jet Black



315 - Chilly Red



316 - Bottle Green



1701 - Rust



1702 - Red



1703 - L. Grey



1704 - Cream



1705 - D. Grey



1706 - Blue



3401



3402



3403



3404



3405



3406



1201- Brown



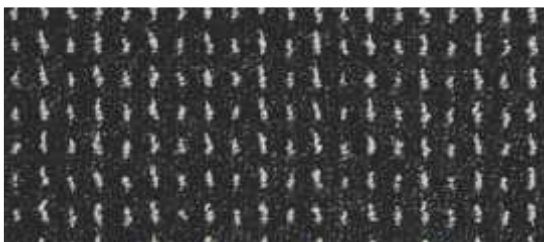
1202 - Red



1203 - Grey



1204 - Beige



1205 - Charcoal



1206 - Blue



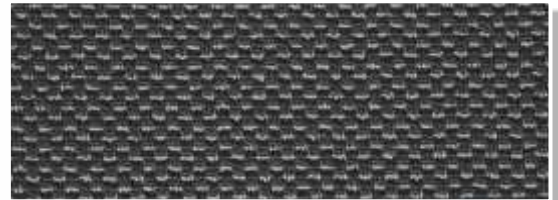
1305 - D. Blue



1309 - P. Blue



1310 - L. Grey



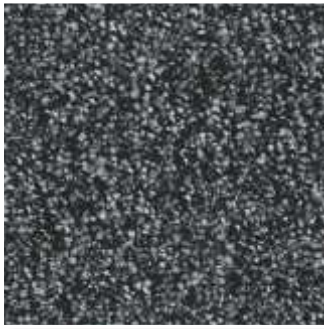
1311 - D. Grey



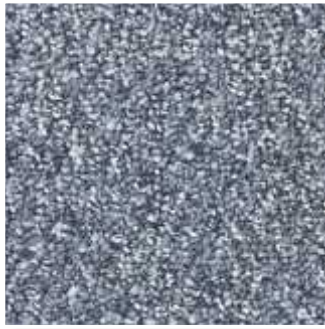
1312 - Red



1313 - Rust



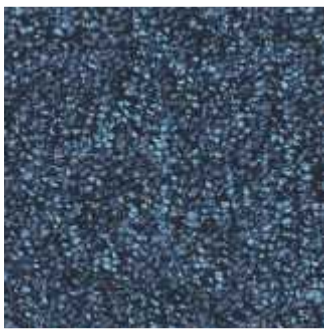
2801 - Strom Grey



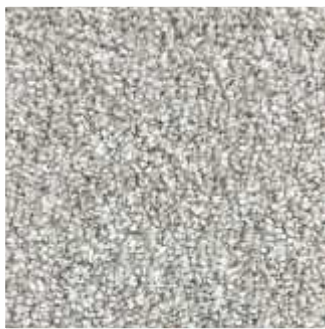
2802 - Smoke Grey



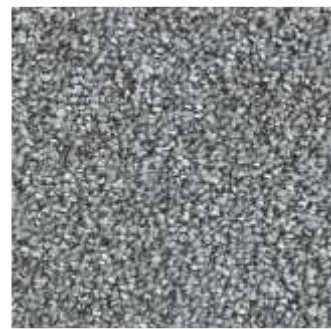
2803 - Spice Brown



2804 - Ocean Blue



2805 - Dessert Brown



2806 - Vanilla Chocolate



1401 - Beige



1402 - Maroon



1404 - P. Blue



1405 - L. Grey



1406 - Red



1407 - Candy



1409 - D. Blue



1410 - Chilly Red



1412 - Gold



3601



3602



3603



3604



3605



3606



3609



3501



3502



3503



3505



3506



3509

Carpet Tiles

Carpet Tile & Planks also known as Modular Carpet is a type of flooring material made up of individual carpet squares & planks that can be laid in a variety of patterns to create a seamless floor covering. The characteristics of carpet tiles include:

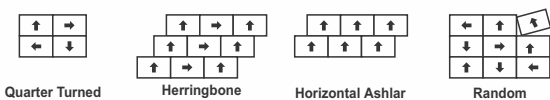
- **Durability:** They are typically made of durable materials that can withstand heavy foot traffic. They are resistant to wear and tear and maintain their appearance over time.
- **Versatility:** Carpet tiles & planks come in a variety of colours, textures, and patterns, making it easy to match the decor of any room.
- **Flexibility:** They offer more design options, as tiles can be mixed and matched to create unique patterns or colour combinations.
- **Ease of Maintenance:** Individual tiles or planks can be easily replaced in case of damage or staining, rather than having to replace an entire carpet.

In terms of utility, carpet tiles & planks offer a number of benefits for commercial office spaces and residential areas. They are commonly used in homes as a cost-effective and attractive flooring option due to its durability and versatility. They can be used to create a comfortable and attractive work environment, and their durability makes them ideal for high-traffic areas. They also help to reduce noise and improve indoor air quality, as well as provide a warm and cushioned surface for to work on.

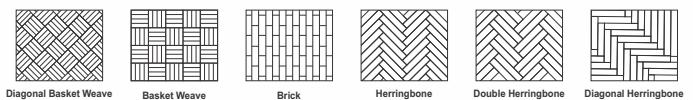
Technical Details

	ACE	TRIO	CANDID	TOPAZ	BARCODE NX	LISBON NX	LINUX	ROME	PARIS	BERLIN NX	BRISBANE	CANBERRA	SPARKLE	JACQUARD
Construction	Loop Pile		Level Loop		Loop Pile			Multi Level Graphic		Multi Level Graphic		Multi Level Graphic	Multi Level Woven Effect	
Pile Fibre Composition	100% Polyolefin		100% Polyolefin		100% Polyolefin			100% Polyolefin		100% Polyolefin		100% Polyolefin	Polypropylene B.C.F. Inter Mingle Yarn	
Tufting Gauge	5/51		5/51		5/51			5/51		5/64		5/64	5/51	
Pile Weight	450 g/m		520 g/m		600 g/m			600 g/m		600 g/m		600 g/m	650 g/m	
Total Weight	3000 g/m		3400 g/m		3500 g/m			3500 g/m		3600 g/m		3400 g/m	3650 g/m	
Total Thickness	Approx 5 mm		Approx 6 mm		Approx 7 mm			Approx 7 mm		Approx 7 mm		Approx 7 mm	7 mm(+ 0.5mm)	
Backing Structure	Non Woven with Eco Back		Non Woven with Eco Back		Fiber Glass Reinforced PVC			Non Woven with Eco Back		Non Woven with Eco Bitumen		Non Woven with Eco Bitumen	Modified Bitumen with PET Non Woven Fabric	
Tile Size	500 mm X 500 mm		500 mm X 500 mm		500 mm X 500 mm			0.25 mtr X 1.00mtr		500 mm X 500 mm		500 mm X 500 mm	25cm x 100cm	

Recommended Installation for Carpet Tiles



Recommended Installation for Carpet Planks





3101



3102



3103



3104



2401 - Rust



2402 - Red Black



2403 - L. Grey



2404 - Brown



2405 - D. Grey



2406 - Blue



2501 - Ruby



2502 - Orange



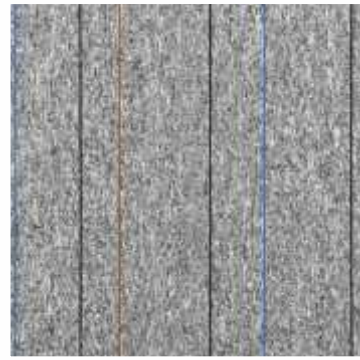
2503 - Emerald



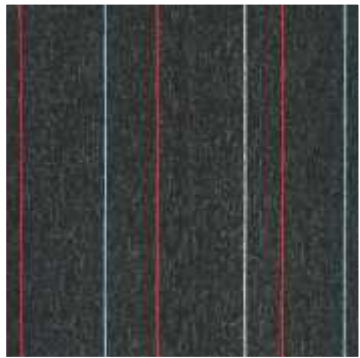
2504 - Indigo



3201



3202



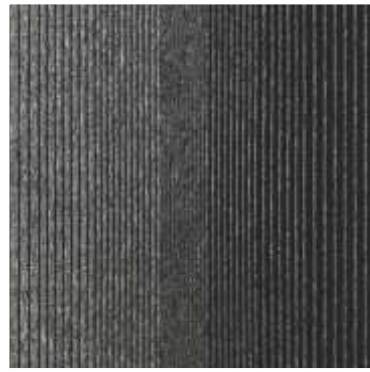
3203



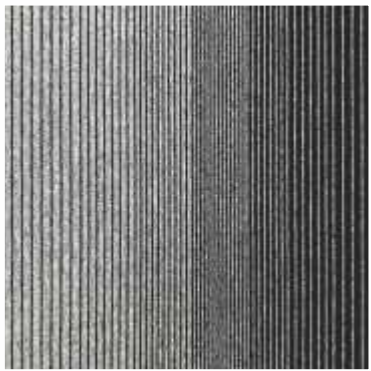
3304



705



706



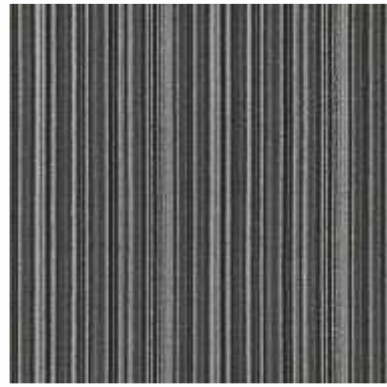
707



708



605



606



607



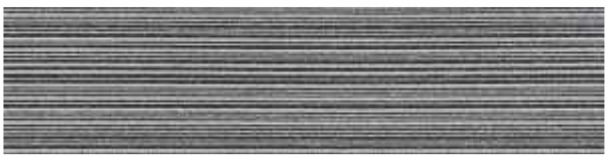
608



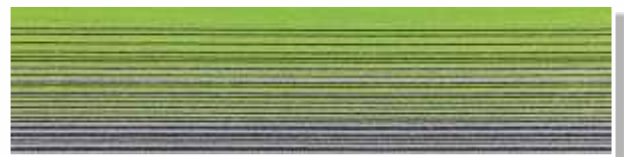
2901 - Blue



2911



2902 - Light Grey



2922



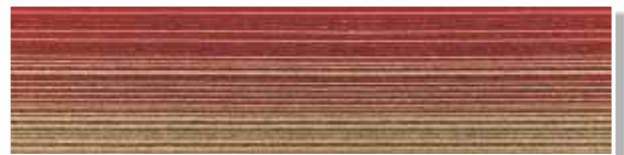
2903 - Dark Grey



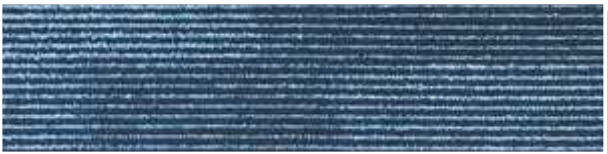
2933



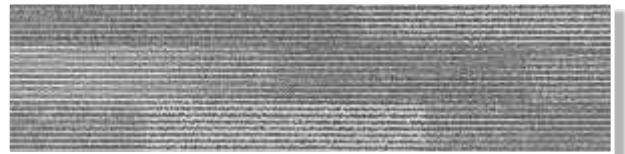
2904 - Brown



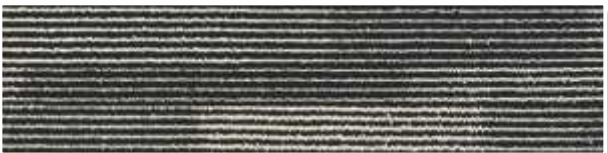
2944



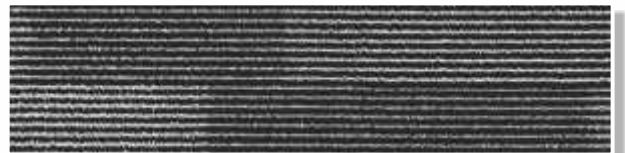
2601 - Blue



2602 - L Grey



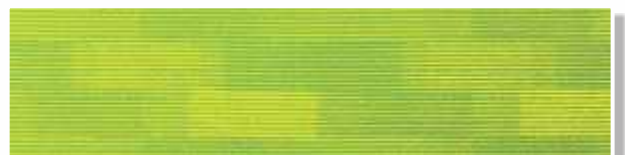
2603 - Brown



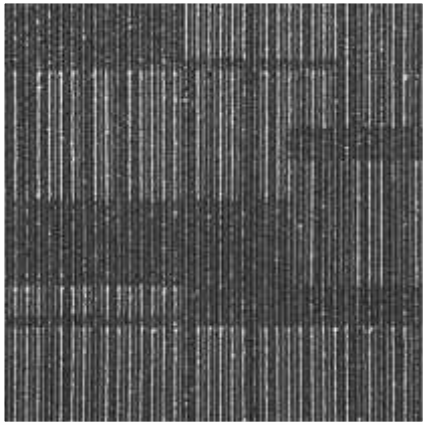
2604 - D Grey



2701 - Orange + Red



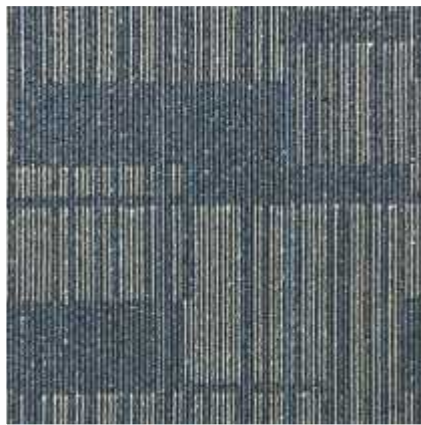
2702 - Green + Yellow



907



906



905



2201



2202



2203



2303



2302



2301



3301



3302



3303



3304



3305



3306



BLUE

GREEN

RED



3701



3711



3712



3721



3722



3731



3732

Artificial Grass

Artificial Grass, also known as Landscape Grass is made up of a combination of material such as plastic and rubber. It is designed to mimic the texture, colour, and thickness of natural grass. Some of its key characteristics include:

- **Durability:** Artificial grass can withstand heavy foot traffic, harsh weather conditions, and does not fade easily.
- **Low maintenance:** It does not require watering, mowing, or fertilizing.
- **Cost-effective:** In the long run, it can save money on water bills and landscaping maintenance costs.
- **Environment friendly:** It eliminates the need for harmful pesticides and herbicides.
- **Versatility:** It can be used in a variety of applications such as sports fields, residential lawns, commercial landscaping, and more.

The utility of Artificial Grass is to provide a low-maintenance and long-lasting alternative to natural grass, making it suitable for use in a variety of settings and conditions. Artificial Grass is used in indoor as well as outdoor setting such as offices, commercial spaces, and event venues, where lush or green appearance is desired.



20 mm



3 Tone

4 Tone

25 mm



3 Tone

4 Tone

30 mm



3 Tone

4 Tone

35 mm



3 Tone

4 Tone

40 mm



3 Tone

4 Tone

50 mm



3 Tone

4 Tone



10 mm



14 mm



16 mm
Parrot Green



16 mm
Dark Green

Garden



201 - Maroon



202 - Rust



203 - Cream



204 - Fawn

Track



1601 - RUST



1602 - RED



1603 - L GREY



1604 - CREAM



1605 - D-GREY

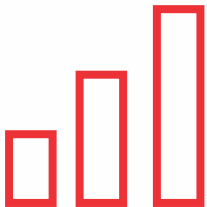


1606 - BLUE



Our Vision

Our vision is to provide one stop Solutions to all your Interior needs.



Our Mission

Our mission is to consistently position ourselves as one of the leading Company in Flooring Solutions.



Our Goal

Our goal is to move forward together with our clients and satisfy all our customers with trending products.

Our Journey

"SOLUTIA", A Division of Mohanlal & Sons, is one of the oldest Company in India, providing Flooring Solutions. We are dealing in Vinyl Floorings, Carpets, Carpet Tiles, Wooden Floorings, Artificial Grass, Wallpaper, Mats & Mattings and other related products and provide one stop Solutions to all your Interior needs.

Started in 1940, journey till now has been splendid. We represent leading Manufacturers of Vinyl Floorings, Carpets, Carpet Tiles, Laminated Floorings, Artificial Turf, Wallpaper, Mats & Mattings and other related products and have done a lot of hard work consistently to position ourselves as one of the leading Company in the state of Maharashtra and Bombay.

Moving a step ahead in this journey, we have launched an Import House to service National and International Market for similar range of products. All our products from this Import House are marketed under a Registered Brand viz. "SOLUTIA"

Our Endeavour to satisfy you will always be on!

Journey Continues.....

"CHANGE IS THE BASIC RULE OF NATURE"

By adopting this Principle, we adjust ourselves suitably so that we can prosperously move forward together with our clients for mutual advantages.

"THIS IS OUR MOTTO"



Channel Partners



Mumbai



Maharashtra



Delhi



Karnataka



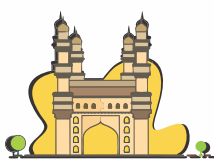
Kolkata



Kerala



Tamilnadu



Andhra & Telangana



Madhya Pradesh



Gujarat



Chandigarh